

ACCESSIBILITY TOWN HALL

October 24, 2023

Pratt



Agenda

- **Welcome**

- President Frances Bronet
- Elisabeth Sullivan, Chair, Accessibility Committee

- **Accomplishments & Updates**

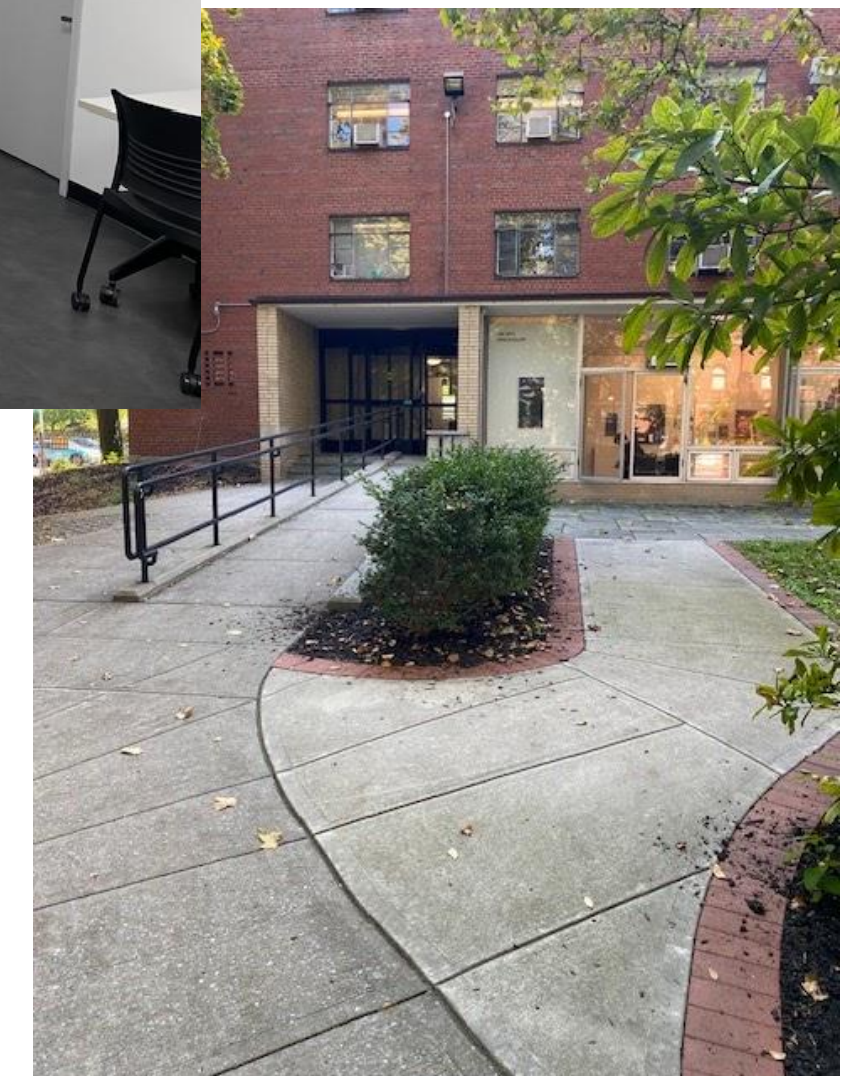
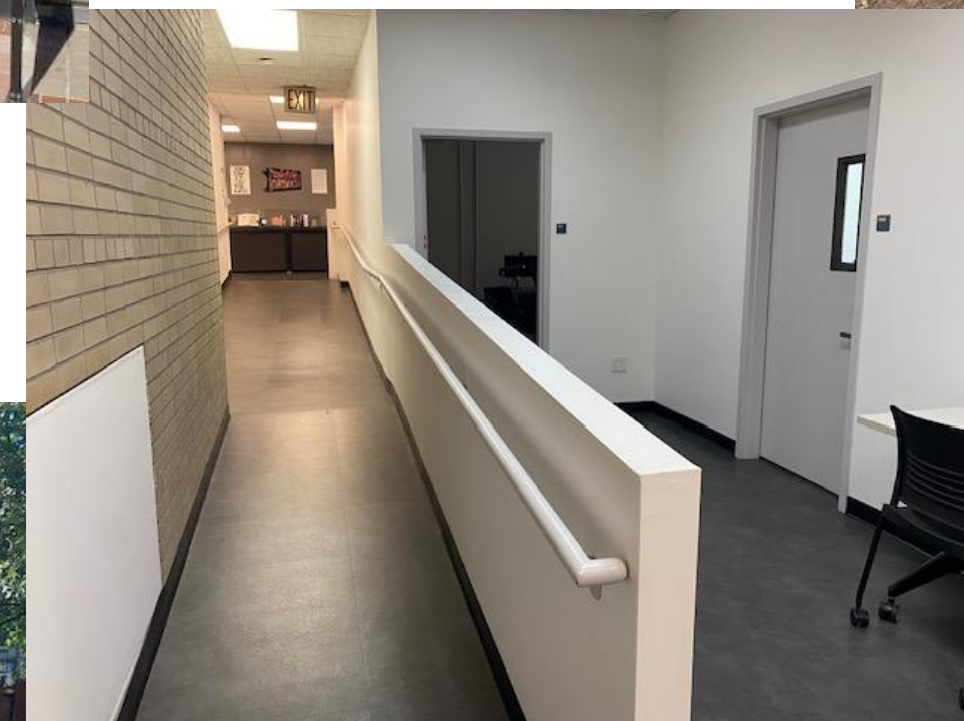
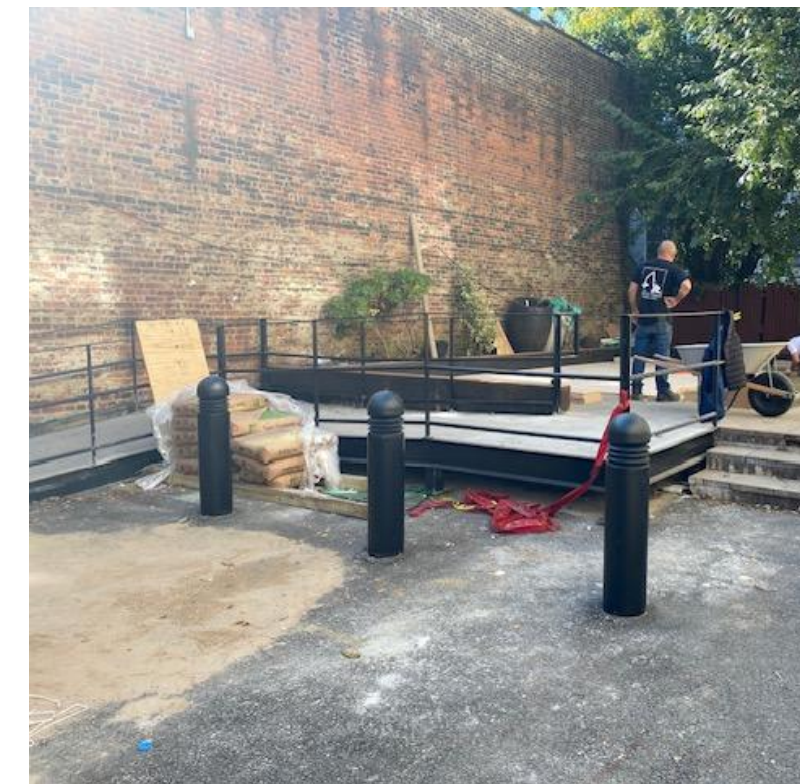
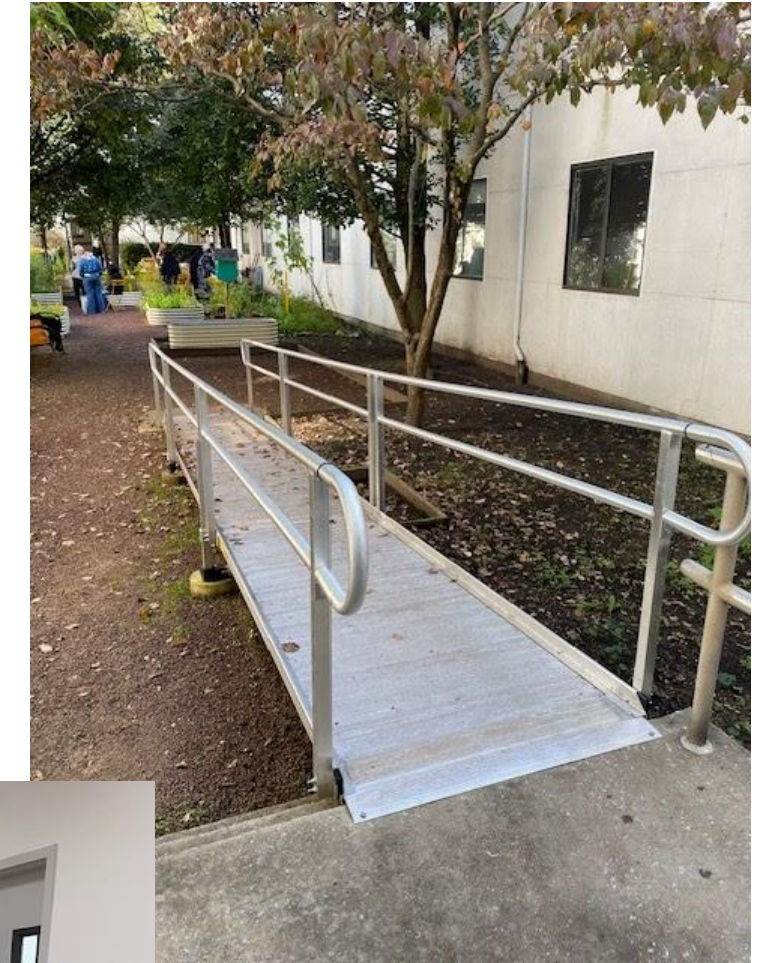
- Facilities
- Campus Safety
- Communications
- Advisory Group
- Other updates

- **Q & A**

Pratt

Recent Accessibility Upgrade Projects

- Photography Lighting Lab - chair lift installed to access lower level
- ISC – accessible ramp install for (2) existing and (1) new classroom from entrance lobby
- Improved access controls for Dekalb Hall and Thrift Hall Mail Center
- Library entrance accessibility reconfiguration of the main entrance
- Cannoneer CT –Dye Garden entrance ramp
- 100 Grand Residence Hall – outdoor patio terrace accessible entrance



Current Accessibility Upgrade Projects

- North Hall Elevator Construction
- Campus wide sidewalk improvements to address uneven surfaces and damaged areas
- Existing Elevator Improvements; Higgins Hall north car - Steuben and Machinery modifications, design

Pratt



JACOBS WYPER ARCHITECTS

North Hall Elevator Entrance

Future Accessibility Projects

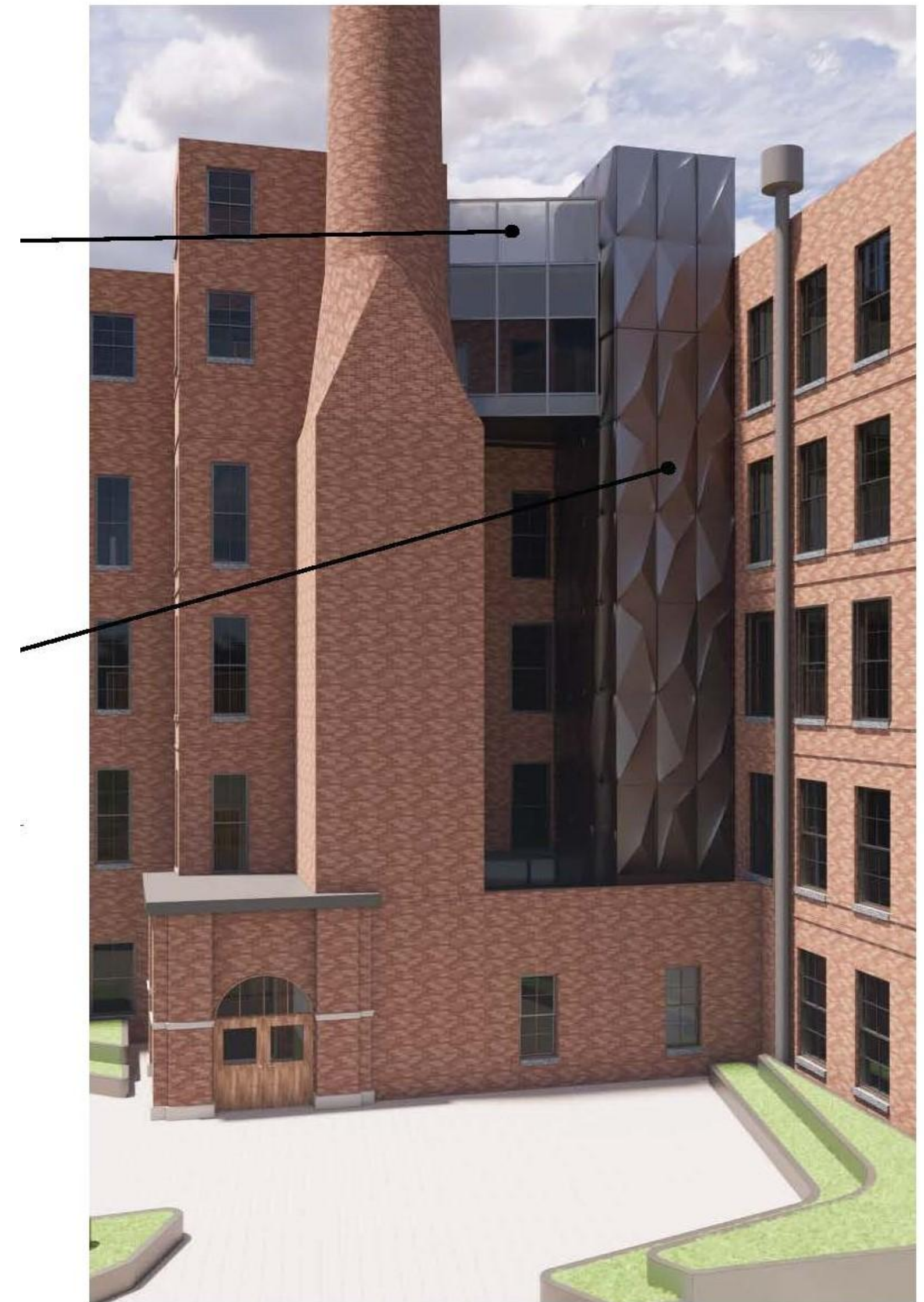
Building Priority List

- North Hall
- East Hall
- Chemistry
- South Hall
- Memorial Hall
- Dekalb Hall
- Cannoneer
- Thrift Hall
- Townhouses

Pratt

ISC - Renovation

- Relocate Health Services
- ADA Compliant Entrance and Restrooms



Feasibility Report for East Hall Elevator Addition | 63

East Hall Elevator Feasibility

Campus Safety

Department of Campus Safety is located at...

East Hall Building -Rms# 003-005

(Adjacent to Interfaith Commons- formerly Chapel Hall)

718.636.3540/3541- Brooklyn Campus

212.647.7776- Manhattan Campus

****Text the Director (347) 497-0959**

(immediate/non-emergency situations requiring Campus Safety assistance)

Pratt

Campus Safety: Mobility Assistance

- Campus Safety personnel can assist with directions, locating accessible routes, or providing other assistance in navigating campus grounds.
- Campus-wide transportation services for mobility-limited people. Campus Safety can provide door transportation (golf cart) door to door service upon request.



Campus Safety: Service Animals

Pratt Institute supports the use of service animals on campus by students with disabilities:

Service Animals are defined under the Americans with Disabilities Act (ADA) as dogs that are individually trained to do work or perform tasks for people with disabilities.

- Service animals are working animals, not pets.
- The work or task(s) performed must be directly related to the individual's disability.

Students with disabilities who wish to bring a service animal to the Pratt campus—including residential facilities, classrooms, and other Institute buildings—may do so without prior approval.

Communications

- Accessibility training
- Error-finding software
- Website **Accessibility Audit:**
 - image ALT text
 - page/content titles
 - eliminating or fixing PDFs
 - graphic images containing text
 - rotating tag graphic
 - new navigation and site menu

Pratt

Pratt

Interior Design, BFA

School of Design

Interior Design

Interior Design, BFA

Interior Design, MFA

Interior Design, Minor

About

Accreditation

Contact

SoD Resources, Labs and Studios


REQUEST INFORMATION

PLAN YOUR VISIT

INFORMATION SESSION

HOW TO APPLY

Become an interior design leader and innovator, setting standards for critical thinking, sustainable practice, ethical and social responsibility, professional aptitude and collaboration as you enhance and transform the built environment.



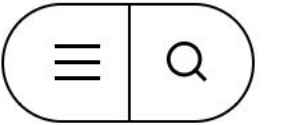
TYPE	DEPARTMENT	SCHOOL	CREDITS	DURATION	COURSES
Undergraduate BFA	Interior Design	School of Design	126	4 Years	Plan of Study

Communications

- **Accessibility section** of website
 - resource links: CTL & OCR video series
 - links to new stories & events
- **Reporting** on access advancements
 - reporting contact Nicole Barnes:
nbarn178@pratt.edu
 - creative contact Charlotte Savidge:
csavidge@pratt.edu
 - website: website@pratt.edu

Pratt

Pratt
News



Social Justice and the Power of a Creative Education



Donald Lee performing Element of Danger at HASTAC 2023 / photo by Ted Ngai

Pratt recently hosted the 2023 HASTAC Conference, which explored the intersection of social justice, design, and the humanities.

Advisory Group

A place for students, faculty, and staff to stay informed on Pratt's accessibility initiatives, and to voice concerns.

Liaison to Accessibility Committee:

- Sarah Burry | sburry@pratt.edu

Additional Updates and Projects Underway

- Advancing Access campuswide campaign underway
- Feedback from Advisory group on Spring Programming
- Joint Course with CTL for Faculty: Creative Accommodations

Accessibility Resources

- Website: Links to accessibility for students (L/AC) and staff/faculty (HR)
 - Will post this PowerPoint
- Email: accessibility@pratt.edu
 - Can use to voice accessibility issues, questions, or concerns, report barriers on campus
 - Goes to several operational areas
- **Text the Director of Public Safety at **(347) 497-0959**
(immediate/non-emergency situations requiring Campus Safety assistance)

Accessibility Resources

- Human Resources: benefits@pratt.edu
- Learning/Access Center: lac@pratt.edu
 - Classroom relocation for temporary accommodations
 - OCR accessibility series: How to make anything accessible!
- Campus Maps
- Mobility Assistance
- [Disability Resource LibGuide](#)

Questions?

Add to chat, submit on Slido
(#328033), or request mic



Accessibility Committee Members

Accessibility Committee:

Chair: Elisabeth Sullivan, Director, Learning/Access Center & 504 Coordinator

Standing Members:

Russ Abell, Director of Libraries

Elizabeth Berg, Associate Director for Access Services, Library

Rod Bowman, Assistant Vice President for Campus Safety & Preparedness

Darelle Daniels, Access Coordinator, Learning/Access Center

Chris Gavlick, Chief Facilities Officer

Lenus George, Director of Technology Support Services

Renae Govinda, Program Manager, The Center for Interdisciplinary Studies

Jim Kempster, Vice President, Communications and Marketing

Delmy M. Lendof, Vice President for Student Affairs

Jazmin A. Peralta, Executive Director of Diversity, Equity, & Inclusion

Charlotte Savidge, Director, Communications

Dan Simonette, Senior Employee and Labor Relations Specialist, HR

Zach Slanger, Instructional Designer, Inclusivity and Academic Success

Jolene Travis, Assistant Vice President for Communications

Tuan Vu, Director of Housing

Advisory Group Liaison:

Sarah Burry, Grad History of Art and Design,
Information Science

Ad Hoc Members:

Nicole Barnes, Project Manager, Communications

Thomas Greene, Director of Legal Affairs

Luke Phillips, Registrar

Thank you for
attending the 2023
Accessibility Town
Hall!

Pratt

